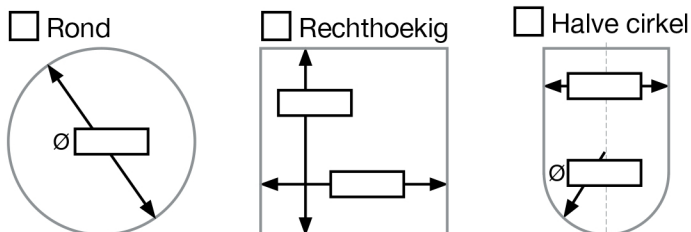


Klant: \_\_\_\_\_  
 Project: \_\_\_\_\_  
 Adres: \_\_\_\_\_

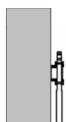
Bedrijfsnaam: \_\_\_\_\_  
 Ordernr.: \_\_\_\_\_  
 Datum: \_\_\_\_\_

## 1 Formaat en ontwerp

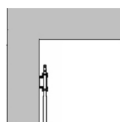


Gelieve alle afmetingen in te vullen in mm

## 2 Installatie omstandigheden



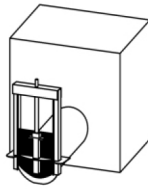
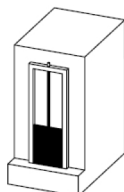
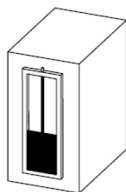
Open



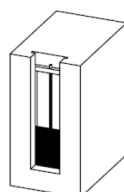
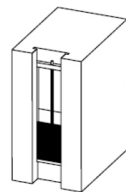
Gesloten kamer

## 3 Installatie

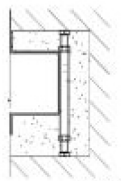
- Zidelings & bodem vastankeren  Zidelings vastankeren & bodem inbetonneren  Monteren op flens (EN1092-2)



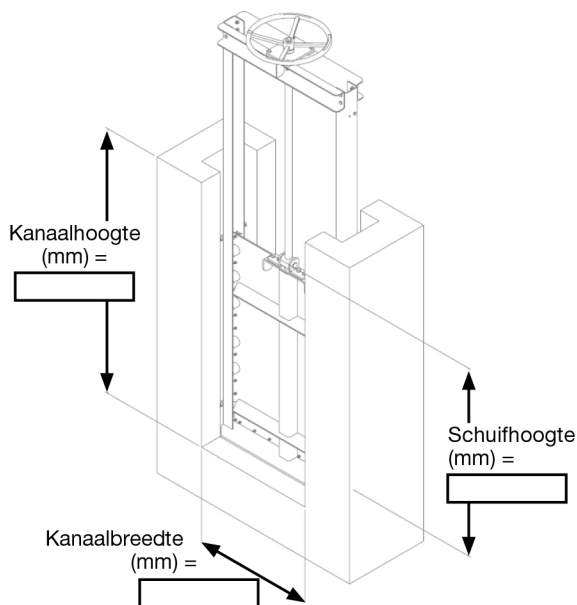
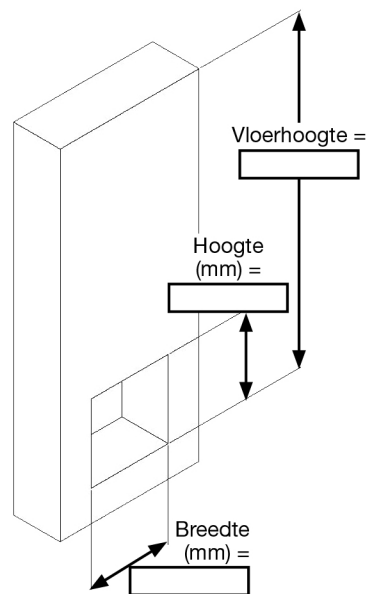
- Zidelings inbetonneren\* & bodem vastankeren  Zidelings & bodem inbetonneren\*



- \* Optioneel:  
 Positioneerbeugel voor zidelings inbetonneren



## 4 Afmetingen en druk



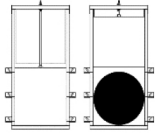
Waterdruk voorzijde (mwk): \_\_\_\_\_

Waterdruk achterzijde (mwk): \_\_\_\_\_

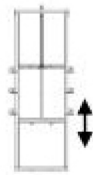
Werkdruk bij normale bediening: \_\_\_\_\_

## 5 Functie

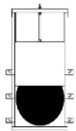
Open - dicht



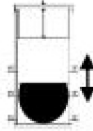
Overstort-type



Begrensd



Regelbedrijf



## 6 Materialen

### Kader en schuif:

Roestvast staal SS304

Roestvast staal SS316Ti

Ander: \_\_\_\_\_

### Dichting:

EPDM

NBR

Andere: \_\_\_\_\_

## 7 Bediening

Manueel:

Spindelkop, vierkant: \_\_\_\_\_ mm

Handwiel

Elektrisch:

• Beschikbaar voltage: \_\_\_\_\_

Aantal fasen: \_\_\_\_\_

• Maximaal vermogen: \_\_\_\_\_ kW

Pneumatisch

• Beschikbare stuurdruk: \_\_\_\_\_ bar

Hydraulisch

• Beschikbare stuurdruk: \_\_\_\_\_ bar

### Positionering:

Bovengronds

Ondergronds

Direct bevestigd op afsluiter

Bevestigd op de afsluiter

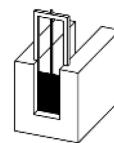
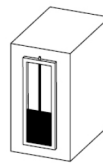
Optioneel met afstand (b):  
\_\_\_\_\_ mm



## 8 Uitvoering dichting

4-zijdig

3-zijdig



## 9 Spindel

### Ontwerp:

In frame (a)

Verhoogde spindelmoer (b)



### Spindel:

Stijgend (c)

Niet-stijgend (d)



### Standaanduiding:

Mechanisch

Elektrisch:

Inductief

Mechanisch

### Opmerkingen: