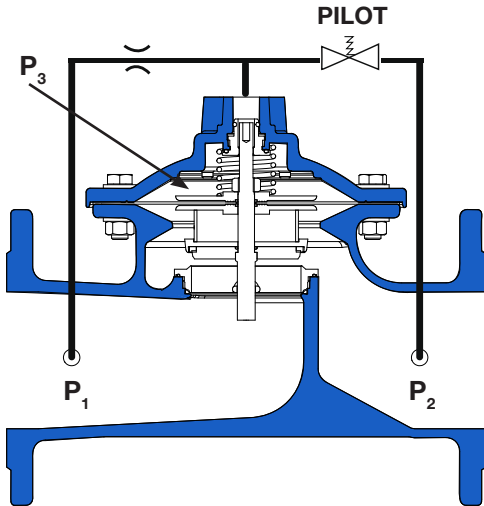




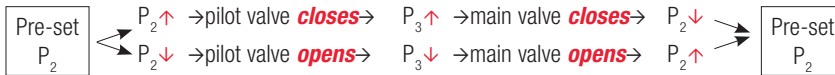
# TECHNICAL INFORMATION - SERIES 859

## AVK CONTROL VALVES

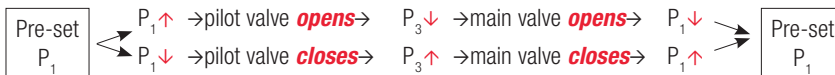


P<sub>1</sub>: Inlet pressure/upstream pressure  
 P<sub>2</sub>: Outlet pressure/downstream pressure  
 P<sub>3</sub>: Control chamber pressure

### Pressure Reducing Valve



### Pressure Sustaining Valve



### K<sub>V</sub> values per DN

Model	DN								
	50	65	80	100	125	150	200	250	300
Reduced bore (standard)	NA	53	83	119	135	202	435	734	990
Full bore (optional)	44	76	116	175	NA	400	710	947	1355

### Formulae (only for water)

K<sub>V</sub>: Cubic meters of water, at 18° flowing through the open valve in one hour with a Δp of one bar.

Q = m<sup>3</sup>/h      P = bar

$$Q = K_V \sqrt{\Delta p} \quad , \quad K_V = \frac{Q}{\sqrt{\Delta p}} \quad , \quad \Delta p = \left( \frac{Q}{K_V} \right)^2$$

### HEAD LOSS

Use the formula:  $\Delta p = \left( \frac{Q}{K_V} \right)^2$

### EXAMPLE: Pressure reducing valve

P1: 8 bar, P2: 3 bar

Flow: MAX – 130 m<sup>3</sup>/h , MED – 40 m<sup>3</sup>/h , MIN – 10 m<sup>3</sup>/h

$K_V = Q/\sqrt{\Delta P}$

$\Delta P = 5$

$K_V = 130/2.24$

$K_V = 58$

For proportional control valves use a 1.3 safety factor to avoid control failure at momentary high flows.

Safety factor      1.3 x 58 = 75

Valve                      DN 80 reduced bore

Referring to EN1074-5, the maximum continuous flow speed is 4 m/sec for PN16, and 3 m/sec for PN10.

# TECHNICAL INFORMATION - SERIES 859

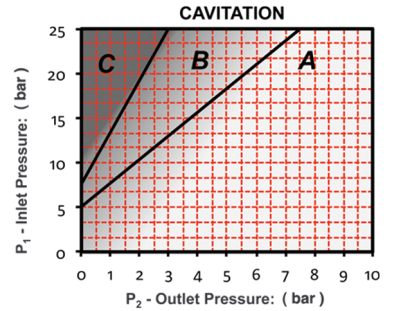
## AVK CONTROL VALVES

### Cavitation

Locate inlet and outlet pressure on the cavitation chart. If point location falls in shaded area C or B, continued use of a standard valve can cause deterioration in valve body and produce more noise and vibration.

- AREA A – standard valve
- AREA B – valve with anti-cavitation trim
- AREA C – valves in series

Please consult AVK for special applications.

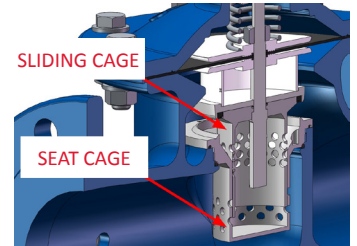


### Anti-cavitation trim

To reduce the risk of cavitation, a valve with anti-cavitation trim incorporates a double sliding cage design in stainless steel AISI 316.

The anti-cavitation trim controls the cavitation, protecting the valve and making sure the valve will not suffer from cavitation erosion.

The anti-cavitation trim reduces the flow significantly.



### Valves in series

To prevent cavitation problems in applications with a high pressure difference between inlet and outlet, a series of two valves or more can be installed.

