

AVK Butterfly valves series 756

How-to-order for DN150-1200

Revision 2023-03-25

1

Valve with gearbox [IP67] and handwheel

Standard epoxy/epoxy PN10/16 butterfly valves including gearbox and handwheel. For installation in chamber, please order:

Integral seat

756-xxxx-104, for DN200-1200 - PN10

756-xxxx-114, for DN150-1200 - PN16

xxxx for dimensions DN150-1200 - PN10/16

Stainless steel seat

756-xxxx-10400009, DN200-1200 - PN10

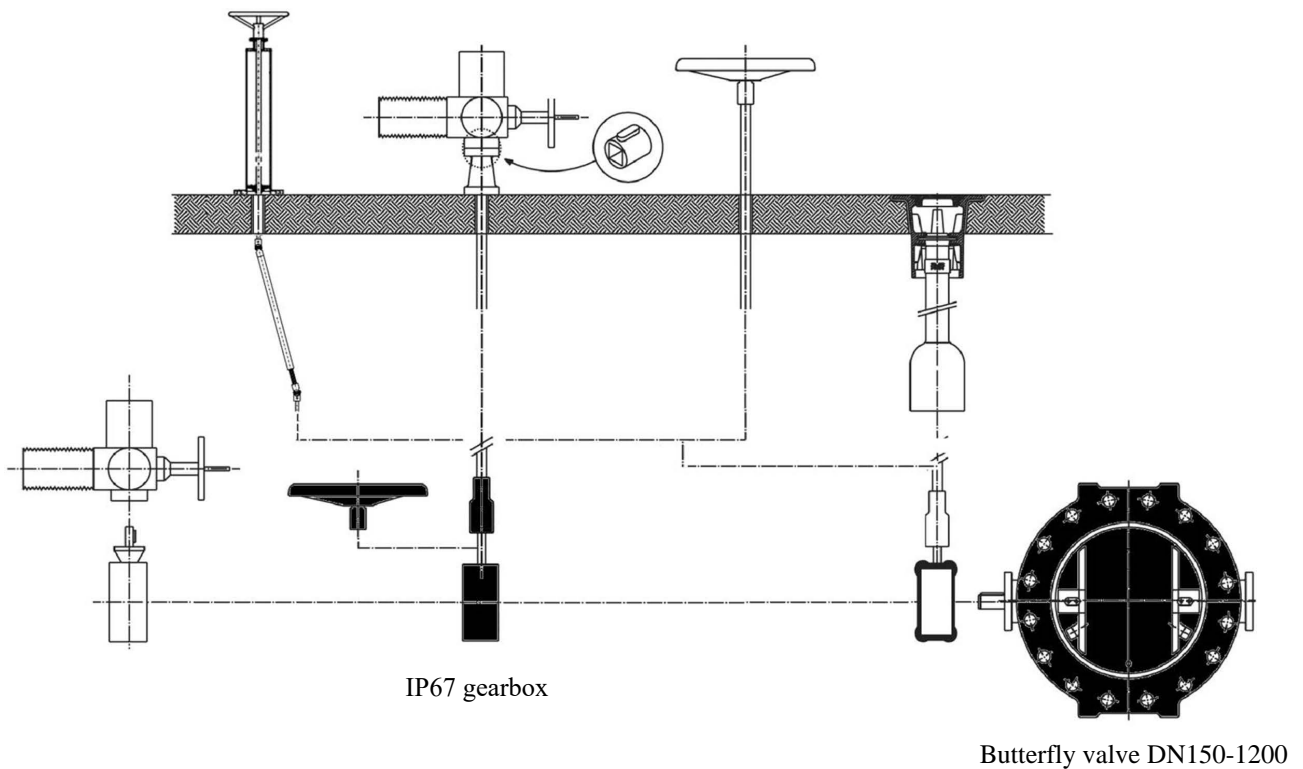
756-xxxx-11400009, DN150-1200 - PN16

xxxx for dimensions DN150-1200 - PN10/16

Valve size	Handwheel max. closing torque (Nm)	Turns to open rev.	Free running torque (Nm)	Min. strength torque (Nm) (EN1074)
DN150	15	8,5	7	30
DN200	40	8,5	7	80
DN250	50	8,5	7	100
DN300	*70/**75	*8,5/**9,5	7	*140/**150
DN350	*80/**85	*8,5/**9,5	7	*160/**170
DN400	*80/**90	9,5	7	*160/**180
DN450	85	*9,5/**14	7	170
DN500	*95/**105	*9,5/**14	7	*190/**210
DN600	*140/**105	*14/**27	7	*280/**210
DN700	*115/**85	*27/**54	12	*230/**170
DN800	*135/**100	*27/**54	12	*270/**200
DN900	100	*54/**82	12	200
DN1000	*100/**120	*61/**82	12	*100/**240
DN1200	*115/**90	*82/**182	12	*230/**180

*PN10/**PN16

All items marked with solid black in below illustration are included in the above configuration.



This valve installation is only for ON/OFF duty.

Valve with gearbox [IP68], extension and street cover

Standard epoxy/epoxy PN10/16 butterfly valve including gearbox IP68, AVK telescopic extension spindle and universal street cover. For installation directly in the ground without chamber, please order:

Integral seat

756-xxxx-104006, for DN200-1200 - PN10
 756-xxxx-114006, for DN150-1200 - PN16
 xxxx for dimensions DN150-1200 - PN10/16

Stainless steel seat

756-xxxx-10400609, DN200-1200 - PN10
 756-xxxx-11400609, DN150-1200 - PN16
 xxxx for dimensions DN150-1200 - PN10/16

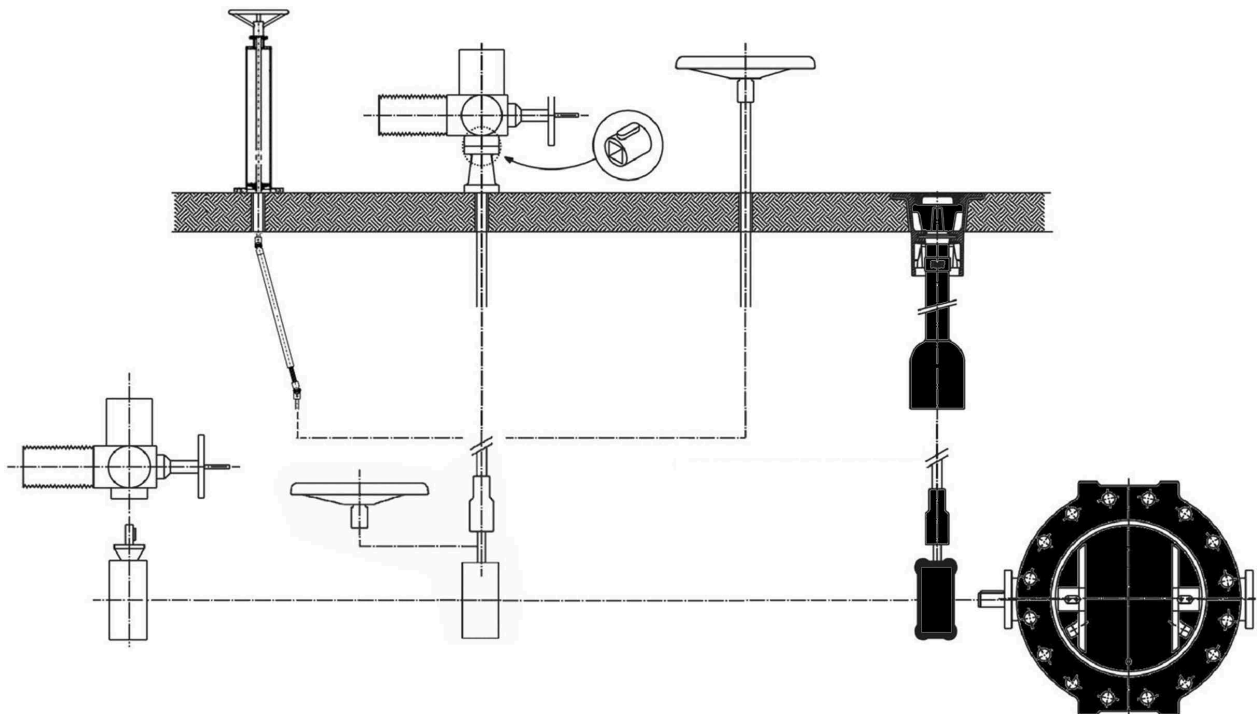
Extension spindle DN150 – DN1200:

04-400-900020042, length 450-700
 04-400-905020042, length 650-1100
 04-400-910020042, length 1050-1750
 04-400-915020042, length 1700-2900
 04-400-922020042, length 2850-5250

Street cover:

04-003-6900, street cover with lid.
 80-46-00001, plastic support tile.

All items marked with solid black in below illustration are included in the above configuration.



Butterfly valve DN150-1200



This valve installation is only for ON/OFF duty.

Valve with gearbox [IP67], extension bar #25mm and handwheel

Standard epoxy/epoxy PN10/16 butterfly valve including gearbox and handwheel, extension carried out with steel bar #25 mm supplied by customer. For installation in chamber and operated by handwheel above ground, please order:

Integral seat / gear IP67

756-xxxx-104, for DN200-1200 - PN10

756-xxxx-114, for DN150-1200 - PN16

Stainless steel seat / gear IP67

756-xxxx-10400009 DN200-1200 - PN 10

756-xxxx-11400009 DN150-1200 - PN 16

Adaptor for gearbox to #25 mm:

756-0400-2800: For DN150-200 PN10/16 mounted to standard IP67 gearbox.

Galvanized rod #25 mm:

To be cold drawn steel grade 37 or grade 52. Supplied by customer, not by AVK.

Adaptor for handwheel:

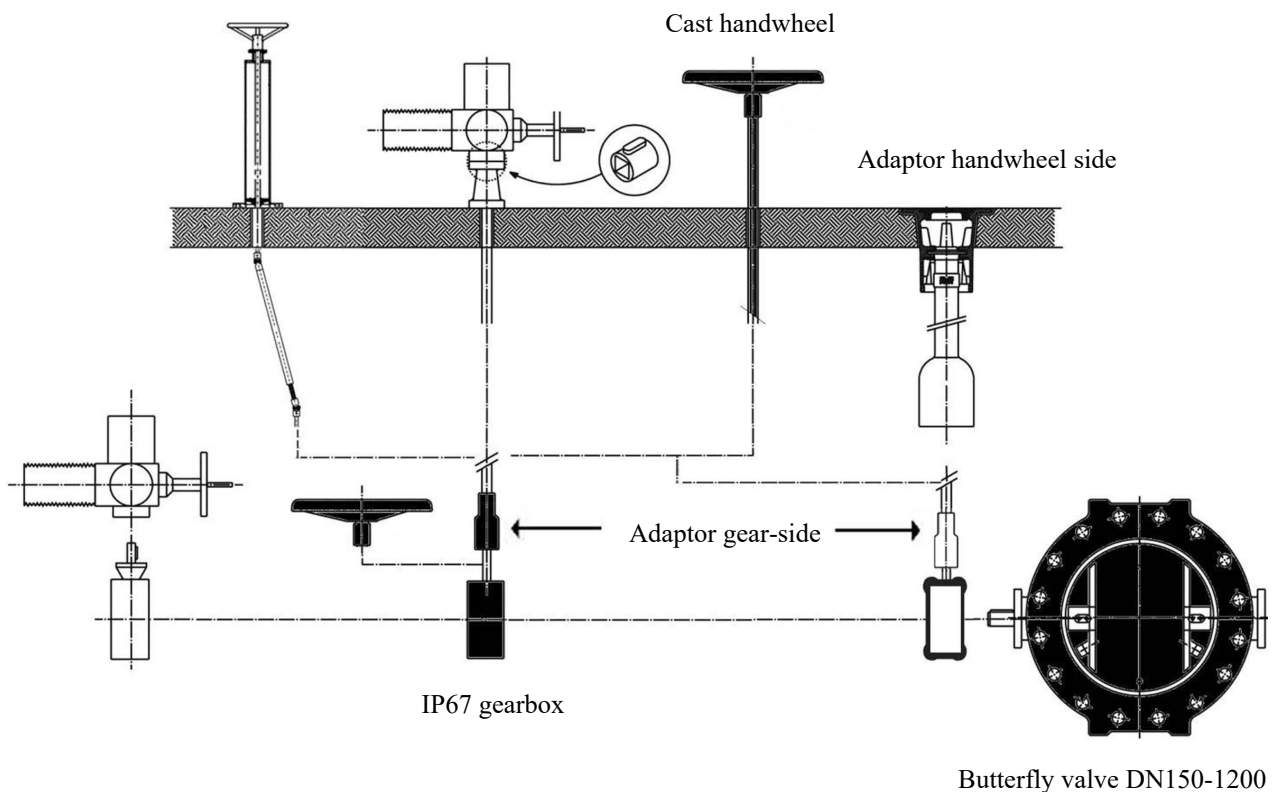
756-0600-4800, for connecting handwheel to galvanized rod and handwheel.

Cast handwheel:

08-200-110000: Handwheel, Ø360 (incl. A2 Hex bolt and washer) for DN150-600 CTC PN10/16

08-400-1100001: Handwheel, Ø640 (incl. A2 Hex bolt and washer), DN700-1200 CTC PN10/16

All items marked with solid black in below illustration are included in the above configuration.



This valve installation is only for ON/OFF duty.

Valve with gearbox [IP67], with T-key operation #30mm – AVK France execution

Standard epoxy/epoxy PN10/16 butterfly valve including gearbox and handwheel, extension carried out with steel bar #25 mm supplied by customer. For installation in chamber and operated by handwheel above ground, please order:

Integral seat / gear IP67

756-xxxx-104, for DN200-1200 - PN10

756-xxxx-114, for DN150-1200 - PN16

Stainless steel seat / gear IP67

756-xxxx-10400009, for DN150-1200 - PN16

756-xxxx-11400009, for DN150-1200 - PN16

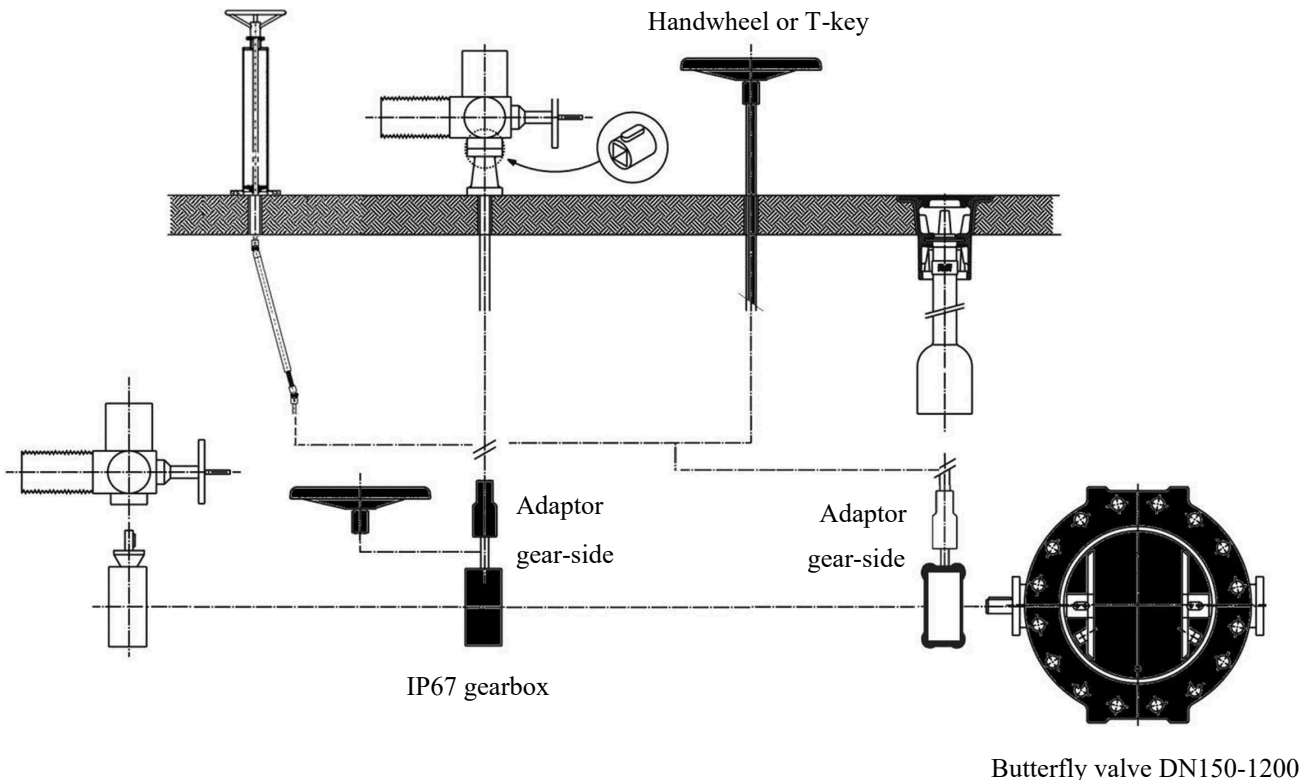
Adaptor for gearbox to #30 mm, for T-key operation: 756-0400-5800:

Stem cap, # 30mm outside

For DN150-1200 PN10/16 mounted to standard IP67 gearbox.

T-key: To be purchased locally

All items marked with solid black in below illustration are included in the above configuration.



This valve installation is only for ON/OFF duty.

Valve with gearbox [IP67], extension bar #25mm and electric actuator

Standard epoxy/epoxy PN10/16 butterfly valve including gearbox, extension carried out with steel bar #25 mm supplied by customer and operated by electric actuator. For installation in chamber and operated by actuator above ground, please order:

Integral seat / gear IP67

756-xxxx-104, for DN200-1200 - PN10
 756-xxxx-114, for DN150-1200 - PN16

Stainless steel seat / gear IP67

756-xxxx-10400009, for DN200-1200 - PN10
 756-xxxx-11400009, for DN150-1200 - PN16

Adaptor for gearbox to #25 mm:

756-0400-2800: For DN150-1200 PN10/16 mounted to IP67 gearbox.

Galvanized rod #25 mm:

To be cold drawn steel grade 37 or grade 52. Supplied by customer, not by AVK.

Flange pipe support:

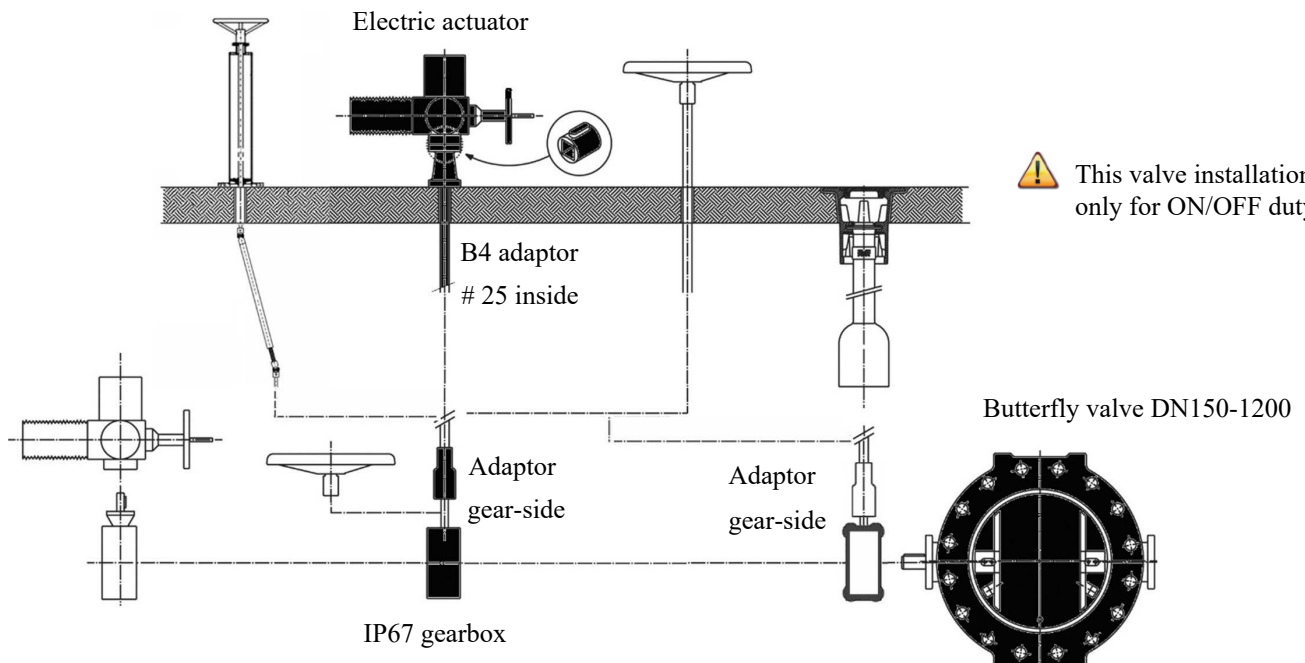
To be supplied by customer, not by AVK, with one flange-end according to ISO 5210.

<u>Actuator AUMA</u>	<u>PN</u>	<u>DN</u>	<u>RPM</u>	<u>ISO 5210</u>
AUMA SA 07.2	PN16	DN150	5,6	F10 Open/Close torque set to 30 Nm
AUMA SA 07.2	PN16	DN300	22	F10 Open/Close torque set to 30 Nm
AUMA SA 07.2	PN10/16	DN350	22	F10 Open/Close torque set to 30 Nm
AUMA SA 07.2	PN10/16	DN350-450	22	F10 Open/Close torque set to 30 Nm
AUMA SA 07.2	PN10	DN500	22	F10 Open/Close torque set to 30 Nm
AUMA SA 07.6	PN10/16	DN200-250	5,6	F10 Open/Close torque set to 60 Nm
AUMA SA 07.6	PN10	DN300	5,6	F10 Open/Close torque set to 60 Nm
AUMA SA 07.6	PN16	DN500	22	F10 Open/Close torque set to 60 Nm
AUMA SA 07.6	PN10/16	DN600	22	F10 Open/Close torque set to 60 Nm
AUMA SA 07.6	PN10/16	DN700-800	22/45	F10 Open/Close torque set to 60 Nm
AUMA SA 07.6	PN10	DN900	45	F10 Open/Close torque set to 60 Nm
AUMA SA 07.6	PN10/16	DN1000	45	F10 Open/Close torque set to 60 Nm
AUMA SA 07.6	PN10	DN1200	45	F10 Open/Close torque set to 60 Nm
AUMA SA 10.2	PN16	DN900-1200	45	F10 Open/Close torque set to 120 Nm

For all actuators, please note:

Power supply according to customer, all actuators must be supplied with connection B4 special order with inside # 25 mm (important only for this configuration). Recommended RPM are based on S15 actuators. Other RPM's on request.

All items marked with solid black in below illustration are included in the above configuration.



Valve with ISO flange gearbox [IP67 or IP68] ready for electric actuator

Standard epoxy/epoxy PN10/16 butterfly valve including ISO flange gearbox and operated by electric actuator. For installation in chamber, and operated by actuator directly on the valve, please order:

Integral seat

756-xxxx-1040(01=IP67 or 23=IP68), for DN200-1200 - PN10
 756-xxxx-1140(01=IP67 or 23=IP68), for DN150-1200 - PN16

Stainless steel seat

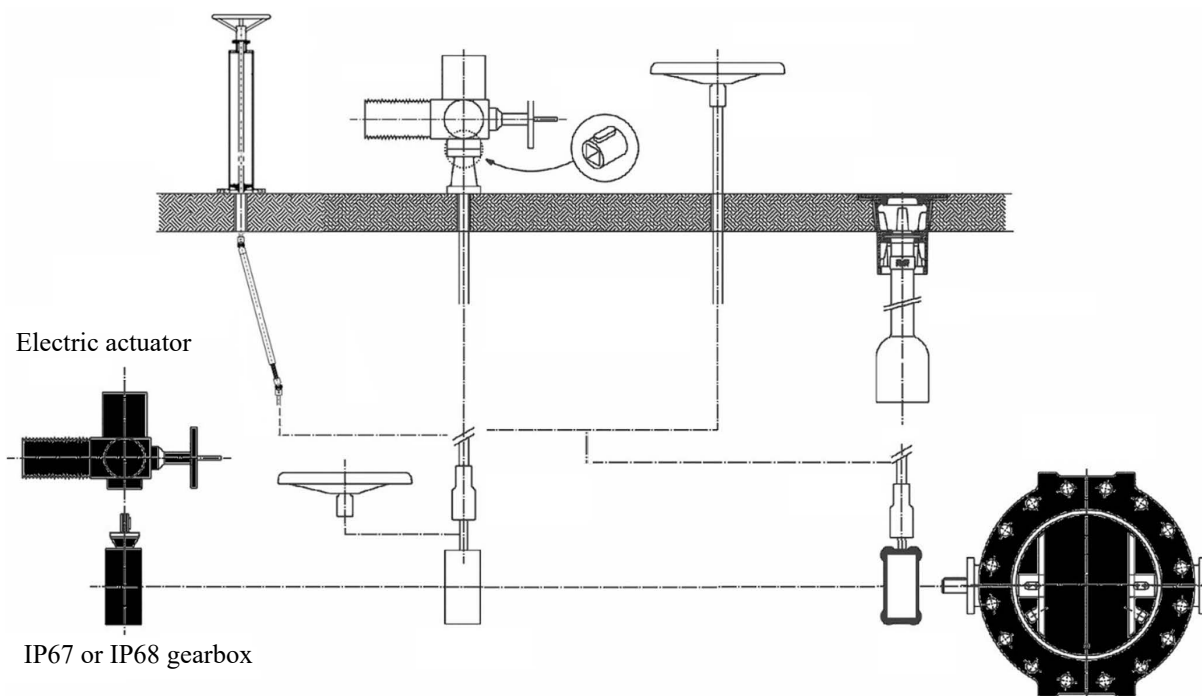
756-xxxx-1040(01=IP67 or 23=IP68)-09, for DN200-1200 - PN10
 756-xxxx-1140(01=IP67 or 23=IP68)-09, for DN150-1200 - PN16

DN	PN	Actuator AUMA	
DN150	PN16	AUMA SA 07.2 - F10, 5,6 RPM, Connector B3-Ø20 / keyway	Open/Close torque 20 Nm
DN200	PN10/16	AUMA SA 07.6 - F10, 5,6 RPM, Connector B3-Ø20 / keyway	Open/Close torque 25 Nm
DN250	PN10/16	AUMA SA 07.6 - F10, 5,6 RPM, Connector B3-Ø20 / keyway	Open/Close torque 50 Nm
DN300	PN10	AUMA SA 07.6 - F10, 5,6 RPM, Connector B3-Ø20 / keyway	Open/Close torque 55 Nm
DN300	PN16	AUMA SA 07.2 - F10, 5,6 RPM, Connector B3-Ø20 / keyway	Open/Close torque 45 Nm
DN350	PN10/16	AUMA SA 07.2 - F10, 5,6 RPM, Connector B3-Ø20 / keyway	Open/Close torque 50 Nm
DN400	PN10/16	AUMA SA 07.2 - F10, 5,6 RPM Connector B3-Ø20 / keyway	Open/Close torque 55 Nm
DN450	PN10/16	AUMA SA 07.2 - F10, 22 RPM, Connector B3-Ø20 / keyway	Open/Close torque 20 Nm
DN500	PN10	AUMA SA 07.2 - F10, 22 RPM, Connector B3-Ø20 / keyway	Open/Close torque 25 Nm
DN500	PN16	AUMA SA 07.6 - F10, 22 RPM, Connector B3-Ø20 / keyway	Open/Close torque 35 Nm
DN600	PN10	AUMA SA 07.6 - F10, 22 RPM, Connector B3-Ø20 / keyway	Open/Close torque 35 Nm
DN600	PN16	AUMA SA 07.6 - F10, 22 RPM, Connector B3-Ø20 / keyway	Open/Close torque 45 Nm
DN700	PN10	AUMA SA 07.6 - F10, 22 RPM, Connector B3-Ø20 / keyway	Open/Close torque 50 Nm
DN700	PN16	AUMA SA 07.6 - F10, 45 RPM, Connector B3-Ø20 / keyway	Open/Close torque 40 Nm
DN800	PN10	AUMA SA 07.6 - F10, 22 RPM, Connector B3-Ø20 / keyway	Open/Close torque 50 Nm
DN800	PN16	AUMA SA 07.6 - F10, 45 RPM, Connector B3-Ø20 / keyway	Open/Close torque 50 Nm
DN900	PN10	AUMA SA 07.6 - F10, 45 RPM, Connector B3-Ø20 / keyway	Open/Close torque 50 Nm
DN900	PN16	AUMA SA 10.2 - F10, 22 RPM, Connector B3-Ø20 / keyway	Open/Close torque 100 Nm
DN1000	PN10	AUMA SA 07.6 - F10, 45 RPM, Connector B3-Ø20 / keyway	Open/Close torque 35 Nm
DN1000	PN16	AUMA SA 07.6 - F10, 45 RPM, Connector B3-Ø20 / keyway	Open/Close torque 50 Nm
DN1200	PN10	AUMA SA 07.6 - F10, 45 RPM, Connector B3-Ø20 / keyway	Open/Close torque 50 Nm
DN1200	PN16	AUMA SA 10.2 - F10, 45 RPM, Connector B3-Ø20 / keyway	Open/Close torque 110 Nm

For all actuators, please note:

Power supply according to customer, all actuators are to be supplied with connection like above (important only for this configuration). Recommended RPM are based on S15 actuators. Other RPM's on request.

 All items marked with solid black in below illustration are included in the above configuration.



This valve installation is only for ON/OFF duty.

Butterfly valve DN150-1200

Valve with gearbox [IP67] and headstock

Standard epoxy/epoxy PN10/16 butterfly valve including gearbox, extension carried out with steel bar #25 mm supplied by customer and operated by headstock with flexible joint. For installation in chamber or underground by headstock above ground, please order:

Integral seat / gear IP67

756-xxxx-04 for DN200-1200 - PN 10

756-xxxx-114 for DN150-1200 - PN16

Stainless steel seat / gear IP67

756-xxxx-10400009 for DN200-1200 - PN 10

756-xxxx-11400009 for DN150-1200 - PN 16

Adaptor for gearbox to #25 mm:

756-0400-2800: For DN150-1200 PN10/16 mounted to IP67gearbox.

Headstock with flexible joint:

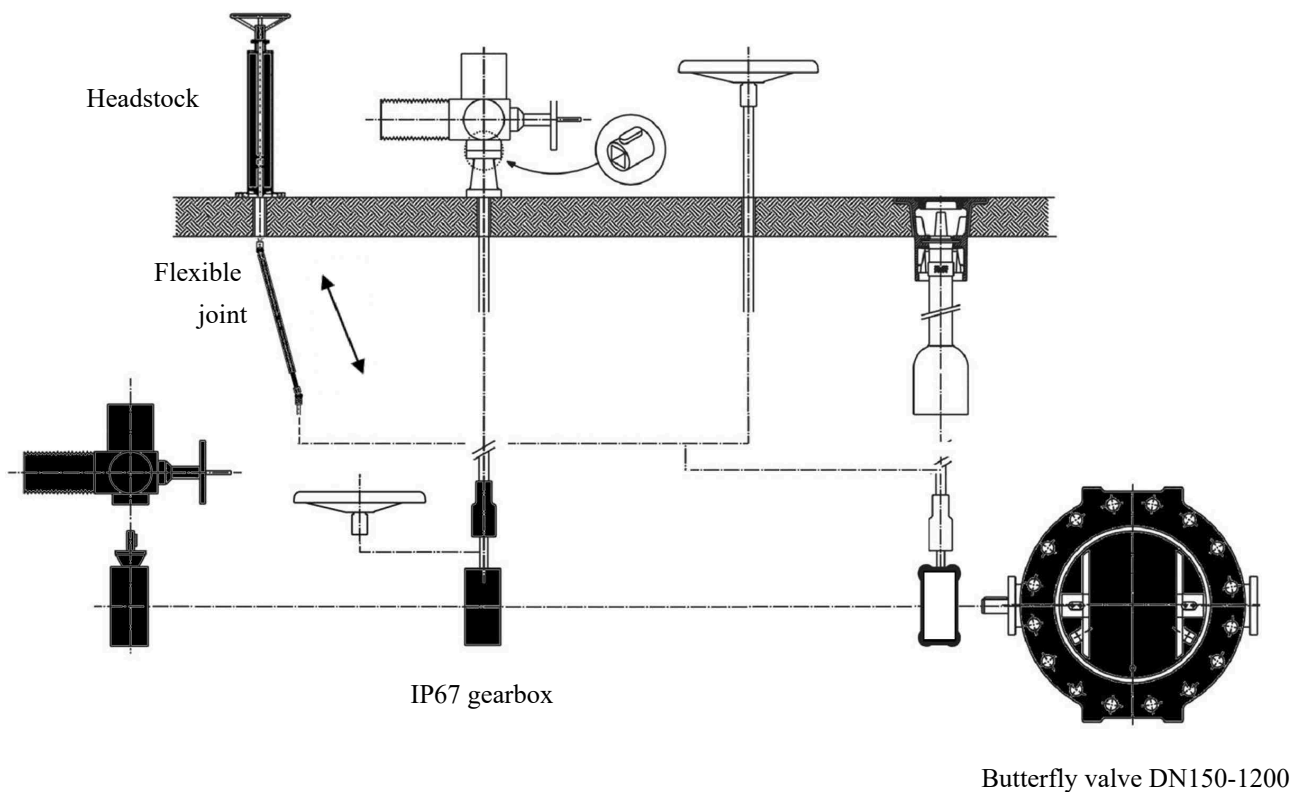
Pricing and sizes on request.

Instead of a handwheel, an electric actuator can be fitted.

When requiring prices, please specify the following:

- Distance between centerline of valve shaft to top floor level (the flexible joint is extendable)
- Handwheel or actuator – handwheel is standard

All items marked with solid black in below illustration are included in the above configuration.



IP67 ISO-flange gearbox 756-xxxx-1x4001 or
IP68 ISO-flange gearbox 756-xxxx-1x4023



This valve installation is only for ON/OFF duty.